



SICAM

CARLINE

Tyre Diagnostics | Tyre Changers | Wheel Balancers | Wheel Aligners

www.sicam.it

FLASH TREAD



The Flash Tread Revolution. Tread Measurement In Seconds.

MEASURING TYRE DEPTH IS IMPORTANT

- It determines how safely the vehicle can accelerate and brake
- Inspections by law are increasing in order to drive down accidents and casualties
- For a workshop, it's a fundamental indicator and an opportunity to grow its business

WITH FLASH TREAD, IT TAKES YOU 5 SECONDS

- It measures the 4 tyres conditions as the vehicle passes over the measuring strip
- Measuring results are displayed in 5 seconds
- Easy introduction into the operator overall vehicle check

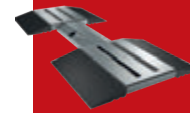
ROBUST CAMERA TECHNOLOGY

- Low profile, no moving parts
- No sensitivity against:
Light exposure
Dust or small objects on the protection side
Vibration
Moisture and temperature
- No need to install any software or app
- No need to have an internet connection
- No need for any subscription to get the results



SMART SOFTWARE - TOUGH DESIGN

- Withstand more than 150.000 vehicle passages
- Axle loads up to 4 tons
- Low profile for vehicle with performance suspensions
- Up to 21 visualization systems can be connected



*Low profile ramps
variant for stan-
dard installation on
ground*

SCOPE OF DELIVERY

- ▶ Ramps (4 pieces)
- ▶ Measuring units (2 pieces)
- ▶ Power cable: 10m
- ▶ Power box
- ▶ Data line cable: 10m
- ▶ Power box
- ▶ Data line cables: 2,5m + 10m
- ▶ Scraper (1pieces)
- ▶ Dehumidifying agent (2 pieces)



*Low profile ramps
variant for in-
spection pit on
ground*

SCOPE OF DELIVERY

- ▶ Ramps (4 pieces)
- ▶ Measuring units (2 pieces)
- ▶ Power cable: 10m
- ▶ Power box
- ▶ Switch (1 piece)
- ▶ Power box
- ▶ Data line cables: 2x10m
- ▶ Scraper (1pieces)
- ▶ Dehumidifying agent (2 pieces)



*In ground variant
for standard instal-
lation*

SCOPE OF DELIVERY

- ▶ Measuring units (2 pieces)
- ▶ Power cable: 10m
- ▶ Power box
- ▶ Switch (1 piece)
- ▶ Data line cables: 2,5m +10m
- ▶ Scraper (1piece)
- ▶ Dehumidifying agent (2 pieces)

Technical specifications	IN GROUND VERSION	FLOOR MOUNTED VERSION
Dimensions in mm (HxWxD)	85 x 2,245 x 1,030 (3,3" x 88,4" x 40,6")	85 x 2,330 x 560 (3,3" x 91,7 x 22,1)
Max. tyre width	450 mm (17,7")	
Track	1,080 - 1,820 mm (42,51" - 71.6)	
Max. speed	8 km/h (5mph)	
Mains supply	100 to 230 VAC 50 - 60 Hz, 1-phase	
Max. axle load	4 t	
Operating temperature range	0-40°C (32-104°F)	
Protection level of measuring modules	IP65	
Software languages	18	

TYRE CHANGERS

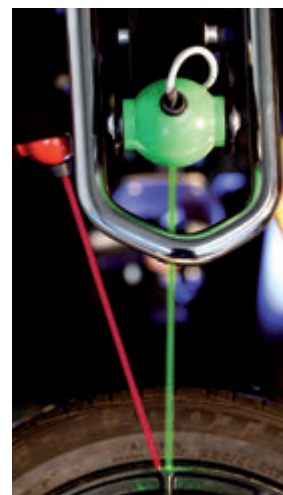
F16



F16

Intuitive with high level of technology, this super automatic tyre changer makes the job simple as you've never experienced.

F16 recognizes the dimension of the wheel by placing two laser pointers. Completely electromechanic, all movements are driven by motor inverters to guarantee precision and reliability.



WHEEL SET UP THROUGH TWO LASER POINTERS

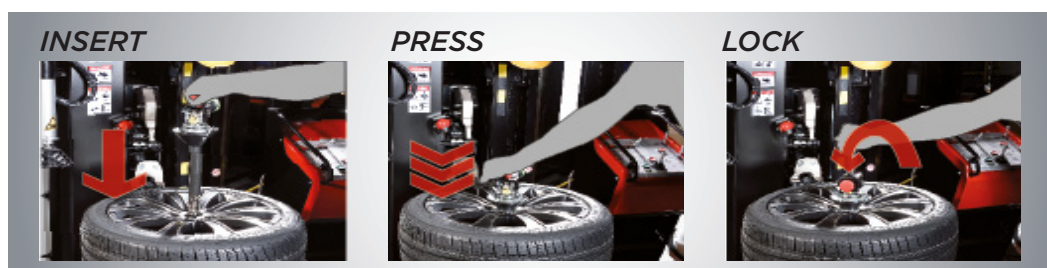
- Intuitive color code system
- 2 independent set up buttons: green one to set wheel diameter, red one to set the wheel width

BEAD BREAKER DISKS

- Double arm bead breaker system
- The strongest Market benchmark
- Inverter technology
- Hump shape pre-set
- Folding structure to save the wheel

CENTER POST CLAMPING SYSTEM EASY AND EFFORTLESS

- Easy and precise locking system
- completely mechanical and easy maintainability
- Faster than any other automatic locking system
- Red color code to identity the locking staged one to set the wheel width



TOOLING SYSTEM

- Keep your ture and wheel safe

SIDE LIFT

- Lifting capacity up to 80 kg
- Allows to work always in an ergonomic position without stressing the back
- Improves productivity

CONTROL PANEL

Maximun usercomfort in a single workstation which includes: inflating control box, control console, pedal.



Technical specifications

F16

Power supply	230 V 1ph 50 - 60 Hz
Air supply pressure	8 - 10 Bar
Rim diameter clamping	12" - 30"
Max. Wheel diameter	1,200 mm (47")
Wheel width	up to 16"
Rotation speed	7 - 16 rpm
Bead breaking force	14,406 N
Bead breaking range	820 mm (32")
Lift capacity	80 Kg
Unit weight	600 Kg
Unit dimensions (WxDxH)	1.880 x 1.850 x 1.750 mm

SCOPE OF DELIVERY

- ▶ 1 x F16
- ▶ 2 x Centre locking protection
- ▶ 2 x Cones protection
- ▶ 2 x locking system pin protection
- ▶ 1 x Cone Ø70 mm
- ▶ 1 x Bead locking plier
- ▶ 3 x Rim protection kit
- ▶ 3 x Mounting tools protection
- ▶ 1 x Flange reduction
- ▶ 1 x Weight scraper
- ▶ 1 x Brush
- ▶ 1 x Grease pot holder



TYRE CHANGERS

F10



F10

Super Automatic Tyre Changer, Pneumatic Movements.

TYRE LEVERLESS SYSTEM (S-TALON) - *Patent pending* -

- Patented mounting & dismounting tool
- Bead stress minimization
- Intuitive hooking
- No touch
- Double tool for mounting & dismounting operations

AUXILIARITY MOUNTING TOOL

- Double arm bead breaker system
- The strongest Market benchmark
- Inverter technology
- Hump shape pre-set
- Folding structure to save the wheel

INFLATING TUBELESS

MECHANICAL CENTRAL CLAMPING

TURNING PEDAL (VARIABLE TURNING DRIVE)

HELPER ARM

DOUBLE SYNCHRONIZE ROLLERS FUNCTION

SIDE LIFT

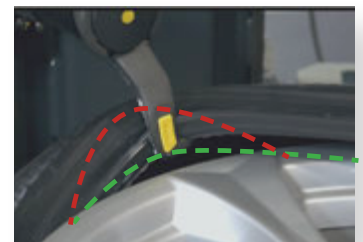
- Lifting capacity up to 80 kg
- Allows to work always in an ergonomic position without stressing the back
- Improves productivity

ERGONOMIC AND ADJUSTABLE CONSOLE

- Easy to adjust for finding comfortable position
- Control position intuitive and sequential
- Integrated manometer
- Realising buttons on side
- Tested control for long life usage



S-TALON
SICAM SOLUTION
For all kind of pneumatics



Technical specifications

F10

Power supply	230 V 1ph 50 - 60 Hz
Air supply pressure	8 - 10 Bar
Rim diameter clamping	12" - 30"
Max. Wheel diameter	1,200 mm (47")
Wheel width	up to 16"
N. turntable speed	2 speed
Rotation speed	7 - 16 rpm
Bead breaking force	14,406 N
Bead breaking range	820 mm (32")
Lift capacity	80 Kg
Unit weight	600 Kg
Unit dimensions (WxDxH)	1.880 x 1.850 x 1.750 mm

SCOPE OF DELIVERY

- ▶ 1 x Cones protection
- ▶ 1 x locking system pin protection
- ▶ 3 x cones
- ▶ 1 x Locking nut + shaft
- ▶ 1 x Flange reverse wheel adaptor + rubber protection
- ▶ 1 x brush
- ▶ 1 x plastic level

FALCO EVO 630 S

FALCO EVO 630 S V6 Basic



FALCO EVO 630 S

Tilting Back Tyre Changer With Center Post Locking System.

CENTRAL POST CLAMPING SYSTEM

- To prevent possible rim/tire damages too
- Faster and easier process with less efforts
- Smart arm locking system

ERGO CONTROL (PATENTED)

Ergo control is a hand breaker system that allows you to execute the operation of tyre beading always in an ergonomic working collision, reducing the time with less effort while always being in a safe position.

- Ergonomic working position: you stand in front of the wheel, not in front of the pedals.
- Increase of safety: the use of the bead breaker level (patented) guards the operator's arm.
- Protection of wheel/rim and TPMS: the control by using the level gives the operator a maximum of sensitivity.
- Intuitive, easy to use: the movement of the table can be driven by only a finger.

HELPER DEVICE

Separate movements of tools:

- Precise control
- Press and/or release where needed
- Follower arm as standard control switches easily & ergonomically accessible double horizontal arm
- Possibility to work with all wheel size
- Faster positioning, no necessity of spacers
- Push & lift the second bead
- Memory ring to save time and to have the arm always in position

SIDE LIFT NG

All new tire changer platforms can be upgraded with the Side Lift NG which allows the operator to always work in an ergonomic position. The Side Lift NG is mounted on the right side of the machine next to the bead breaker which allows for improved productivity.

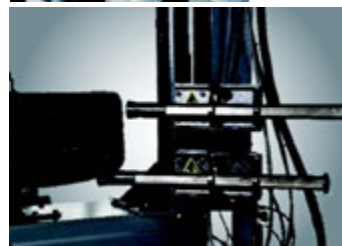
the lift is also equipped with an integrated roller board which leads to an easier and faster bead breaking operation.

TYRE LEVERLESS SYSTEM ("TLL")

Movement of the TLL Levelless system allows to perfectly follow the rim profile making easier the access of the tool allowing perfect bead extraction (WDK approved).

FALCO EVO 630 S V6 BASIC

The FALCO EVO 630 is a 30" tyre changer for high volume workshops and offers all features and user benefits with maximum comfort to perform the perfect and effortless tyre changing.



SCOPE OF DELIVERY

- ▶ 1x Lubricant brush
- ▶ 1x TLL protection kit
- ▶ 1x Wing side protection kit for TLL
- ▶ 1x Bead breaker plastic protection
- ▶ 1x Bead pressing device
- ▶ Helper device with double horizontal arm
- ▶ Ergo Control
- ▶ Boost inflating system
- ▶ Side Lift NG
- ▶ 2 x Center locking protection
- ▶ 2 x Cone protection tool locking system
- ▶ 2 x Pin protection locking system
- ▶ 1 x Cone Ø70 mm
- ▶ 2 x Memory ring for horizontal arms

Technical specifications	FALCO EVO 630S
Main connections	1 Ph - 230 V 50 Hz
Rim diameter	13" - 30"
Rim width	Up to 15"
Max. Wheel diameter	1200 mm
Air connection	8 - 10 bar
N. turntable speed	2 speed
Speed of rotation	7 - 15 rpm
Bead breaker range	75 - 401 mm /Ergo Control
Bead breaking force	11000 N

FALCO EVO 628S

FALCO EVO 624S



FALCO EVO 628S - FALCO EVO 624S pneumatic tilting back tyre changers for passenger cars, light commercial vehicles and motorcycles (with special accessories).

EFFORTLESS

Tire positioning and locking of the mounting/demounting head

FASTER LOCKING

Thanks to the new, more robust design of the turntable

FAST

The two-speed turntable is pedal controlled

EASY TO USE

The control panel can be accessed from any working position

OPTIONAL: Tecnoroller NG

EXTREME PRECISION

The horizontal arm and the auxiliary arm allow the operations to be performed with precise control

NEW AND REVOLUTIONARY ERGO CONTROL (PATENTED)

Easy to use, maximum precision and safety

NG WHEEL LIFT SIMPLE AND EASY TO USE

All new tyre changer platforms can be upgraded with the new NG wheel lift which allows the operator to work in an ergonomic position. The NG wheel lift is mounted on the right side of the machine next to the bead breaker, greatly improving productivity. The wheel lift is also equipped with an built-in roller board which makes the bead breaking operations faster and easier.

	MOTOR 1*	MOTOR 2**	TECNO ROLLER NG	INFLATION TECHNOLOGY IT	ERGO CONTROL	LEVERLESS
EVO 624S	•	•				
EVO 624 IT S	•	•		•		
EVO 624 V1S	•	•	•			
EVO 624 IT V1S	•	•	•	•		
EVO 624 V5S	•	•			•	
EVO 624 IT V5S	•	•		•	•	
EVO 624 V6S	•	•	•		•	
EVO 624 IT V6S	•	•	•	•	•	
EVO 624 V8S	•	•	•		•	•
EVO 624 IT V8S	•	•	•	•	•	•
EVO 628 V1S	•	•	•			
EVO 628 IT V1S	•	•	•	•		
EVO 628 V6S	•	•	•		•	
EVO 628 IT V6S	•	•	•	•	•	
EVO 628 V8S	•	•	•		•	•
EVO 628 IT V8S	•	•	•	•	•	•

* Standard 3-phase motor ** Single-phase motor with inverter

Technical specifications	FALCO EVO 624S	FALCO EVO 628S
Max. wheel diameter	up to 1200 mm	up to 1200 mm
External clamping	10" - 24"	12" - 28"
Internal clamping	12" - 28"	13" - 32"
Rim width	3" - 12,5" 4" - 15" (V8)	3" - 15" 4" - 15" (V8)
Bead breaker range	70 - 397 mm	70 - 397 mm
Air connection	8 - 10 bar	8 - 10 bar
Max. dimensions (L x H x W)	1380 x 2110 x 1840 mm 1450 x 2295 x 2010 mm (V8)	1450 x 2350 x 2010 mm 1450 x 2295 x 2060 mm (V8)
Net weight	317 kg; 385 kg (V8)	360 kg; 385 kg (V8)
Bead breaking force	11500 N	11500 N
MOTOR 1 VARIANT		
Three-phase mains connection	3 Ph - 400 V 50 Hz	3 Ph - 400 V 50 Hz
Power draw	8 - 10,5 A	8 - 10,5 A
(torque control) 7/15 RPM	(2 speeds) 7/15 RPM	(2 speeds) 7/15 RPM
MOTOR 2 VARIANT WITH FREQUENCY CONVERTER		
Three-phase mains connection	1 Ph - 230 V (50 - 60 Hz)	1 Ph - 230 V (50 - 60 Hz)
Power draw	23 - 24 A	23 - 24 A
Rotation speed	(torque control) 7/15 RPM	(torque control) 7/15 RPM
STANDARD EQUIPMENT		
Tyre inflater (pedal-controlled)	•	•
Jaw plastic protection kit	•	•
5 mounting head protectors	•	•
Plastic guard for bead breaker tyre/rim protection	•	•
Protective wing for mounting/demounting head	•	•
Lubricant brush and bead lever	•	•
Roller board	optional	optional
Ergo Control	• (V5, V6, V8)	• (V6, V8)
Tecnoroller NG	• (V1, V6, V8)	•
TECNOROLLER NG		
Bead breaking force	5500 N (horizontal arm) 2500 N (auxiliary arm)	



TYRE CHANGERS

FALCO EVO 620S FALCO EVO 620 S V2



FALCO EVO 620 S are pneumatic tilting back pole passenger car tyre changers.

STABILITY AND STRENGTH

New G-frame concept with new, additional structural elements for improved strength. The bead breaker and the base of the pole are welded to the body to improve its strength and solidity over time

FLEXIBILITY

Able to process any kind of car, light commercial vehicle and motorcycle (with special accessory kit) wheels: max wheel diameter 1100 mm and max wheel width 11".

SAFETY

Plastic pole protection with integrated holders for tools and valves

EASY TO USE AND FAST

- Inflating system controlled by gun with manometer [bar/psi]
- Bead breaker shape designed to protect the rim from risk of scratches
- Second speed with pedal selection (FALCO EVO 620)
- New pull-out pedal unit for quick, convenient maintenance
- "SIDE LIFT" available as accessory for all models, maximum comfort and ergonomics

Installation of the Tecnoroller NG helper system enables exceptionallu quick, easy mounting and demounting of any kind of tire, even the most difficult UHP or RFT types.



Technical specifications

FALCO EVO 620 S

Mains connections
1 Ph - 230V 50 - 60 Hz
3 Ph - 400 V 50 - 60 Hz
3 Ph - 230 V 50 - 60 Hz
1 Ph - 110V - 60 Hz

External clamping
10" - 22"

Internal clamping
12" - 24"

Rim width
3" - 11"

Max. wheel diameter
1100 mm

Bead breaker range
65 - 305 mm

Air connection
8 -10 bar

Rotation speed
7,5 - 15 rpm

Dimensions max. (H x D x W)
1960 x 1660 x 1350 mm

Pole folded
1860 x 1660 x 1950 mm (V1)

Net weight
230 kg

SCOPE OF DELIVERY

- ▶ 1x Bead lever
- ▶ 1x Lubricant brush
- ▶ 1x Inflating gun system with pipe connections

FALCO AL 520 S



Tilting back post tyre changer, it's the right entry level tyre changer.

VARIANTS

FALCO AL 520S (B)

Basic version without inflating system

FALCO AL 520S (EU)

Basic version ready for inflating system connection

FALCO AL 520S (F)

Full version with inflating gun system with pipe connections

FALCO AL 520S (IT)

Full version with IT kit and plastics

FALCO AL 520S 2V (B)



Technical specifications	FALCO AL 520S
Mains connections	3 Ph - 400 V50 - 60 Hz 3 Ph - 230 V 50 Hz 1 Ph - 110 V - 60Hz
External clamping	10" - 20"
Internal clamping	12" - 23"
Rim width	3" - 11"
Max. wheel diameter	1000 mm
Bread breaker range	65 - 300 mm
Air connection	8 - 10 bar
Rotation speed	7,5 rpm
Dimensions max. (HxDxW)	1860x1660x1200 mm 1860x1660x1800 mm (V1)
Net weight	223 kg

SCOPE OF DELIVERY

- ▶ 1 x Bead lever
- ▶ 1 X Lubrificant brush
- ▶ 1 x Inflating gun system with pipe connections

COLIBRI' BL 512



COLIBRI BL 512 swinging arm tyre changer, its lateral movement allows you to easily position the tool. The compact size of this machine makes it easy to position even in small spaces.

- Mechanical blocking which moves the tool vertically away from the edge of the rim.
- Manual adjustment of horizontal distancing movement.
- The double pedal for plate rotation makes use of the appliance more ergonomic.
- The swing arm opens laterally thus reducing clearance space.
- Tecnoroller swing



Technical specifications	NET WEIGHT	VOLTAGE	HORSE POWER	ROTATION SPEED	AIR CONNECTION	EXTERNAL CLAMPING	INTERNAL CLAMPING	RIM WIDTH	MAX WHEEL DIAMETER	BEAD BREAKING FORCE
BL 512	195 kg	110V1ph 60Hz 230V 1 ph 50-60 Hz 230/400V 3 ph 50 Hz	1 hp 1,5 hp 0,75 hp	7rpm 7rpm 7rpm	8 - 10 bar	10" - 20"	12" - 23"	9"	1100 mm	10000 N
BL 512 IT	202 kg	110V1ph 60Hz 230V 1 ph 50-60 Hz 230/400V 3 ph 50 Hz	1 hp 1,5 hp 0,75 hp	1 hp 1,5 hp 0,75 hp	8 - 10 bar	10" - 20"	12" - 23"	9"	1100 mm	10000 N
BL 512 IT	202 kg	110V1ph 60Hz 230V 1 ph 50-60 Hz 230/400V 3 ph 50 Hz	1 hp 1,5 hp 0,75 hp	1 hp 1,5 hp 0,75 hp	8 - 10 bar	10" - 20"	12" - 23"	11"	1100 mm	10000 N



WHEEL BALANCERS

SBM WAVE 7

AWLP and AWL available too



SONAR

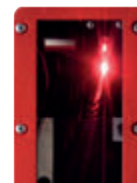


Two Sonar devices that scan the wheel to optimise the perfect tyre-rim weight combination



**LASER
SCANNER UNIT**

The smart solution that recognises the rim profile and type and show you where to put the weight



SBM WAVE 7

Super automatic wheel balancer, laser and sonar no touch technology for a quick balance. Run-Out and service programmes for operators.

HMI - Human Machine Interface

HARDWARE

Monitor Touch Screen

- Industrial application
- Anti-glare panel
- Touch screen gloves friendly

Smart Pedal

- Flange control
- Switch tyre position for weight application
- Increase in the user working place
- Fixed and ergonomic monitor position
- Efficient and organized weights organizer

SOFTWARE

LSU (Laser Screen Unit)

- Laser Control
- Laser Programming

GRU (Graphic Power Unit)

- Laser Control
- Laser Programming

WBU (Wheel Balancing Unit)

- Balancing Control
- Balancing Programming

MCU (Motor Control Unit)

- Mechanical Control
- Mechanical Programming

WBI- Wheel Balance Interface

- Spokes numbers & positions automatic identification
- Automatic wheel type identification
- Automatic wheel data acquisition
- Automatic weight application acquisition
- **HARDWARE:** LSU/SONAR

- OSD - dynamic imbalance optimization
- Imbalance reading at constant speed
- 6s complete cycle
- **HARDWARE:** MCU/Inverter (silent)/ Measurement Shaft 80 Kg
- "Ghost" split weight program
- Double tyre positioning option pedal or monitor touch
- Adjustable laser position program with wheel balancer data self-setup
- Tyre locking in position
- Cycle break in position
- **HARDWARE:**
 - N. 2 Lasers for clip weight application (Internal-external)
 - Mobile internal laser for stick weight (internal)

ROI - Run out Infrace

- Advance area about Run-Out data
- Fast Run-Out check icon
- Guided matching procedure wheel rim pneumatic
- Dedicated diagnosis wheel rim only
- Dedicated diagnosis wheel only
- **HARDWARE:** LSU/Rear sonar

SI - Service Interface

- Guided wheel balancer self diagnosis program for users
- Guided wheel balancer self diagnosis program for professional technician
- USB software updates
- **HARDWARE:** LSU/WBU/MCU/GPU



Technical specifications	SBM WAVE 7
Rim width	1-20 (manually) / 1-15 (automatic data entry)
Max. wheel width	490 mm
Rim diameter	8-40 (manually) / 10-30 (automatic data entry)
Max. wheel diameter	Up to 1,150
Max. wheel weight	80 kg car
Power supply	1-230 V, 50 60 Hz
Balancing speed	220rpm a 50Hz
Compressed air supply	8-10 bar
Max. height	1,300 mm
Max. depth	1,840 mm
Width	1,400 mm
Balance weight	160 kg

SCOPE OF DELIVERY

- ▶ Pliers
- ▶ Weight sample 60 gr
- ▶ Gauge
- ▶ Rubber protection
- ▶ Weight removal blade
- ▶ Flange complete with cones



WHEEL BALANCERS

SBM WAVE 5



Touch Version

*Touch Screen and Digital
Version available too.*

*AW available too
AWL available too
AWLP available too*



Digital Version

SBM WAVE 7

Automatic wheel balancer, laser and sonar technology for a quick balance of every kind of wheel.

NEW GRAPHIC USER INTERFACE

- New Digital display with high quality LCD technology, enhancing sharpness and brightness for a unique digital experience
- 22" Touch screen monitor with HQ graphic
- Just One touch selection
- Re-engineered and intuitive GUI

SELF DIAGNOSTIC

- Automatic check-up for easy troubleshooting
- Ready for remote access

NEW DESIGN

- More space available for tools and weights
- Everything at hand in ergonomic design

QUICK SELECTION PROGRAM (QSP)

- Fast and Automatic recognition of TOP3 Programs: Standard, Alu 2, Alu 3

2 INTERNAL LASER POINTERS

- One fixed laser 12 o' clock positioning for steel rims
- One auto-positioning laser for internal weight applications

1 LASER POINTER

- External
- Fixed positioning for steel rims

AUTOMATIC TIRE POSITIONING

- Time saving for weight application
- Driven-auto positioning in the unbalancing position for internal and external weight application

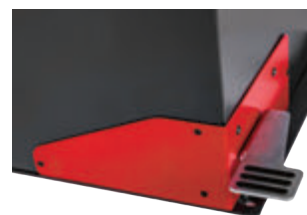
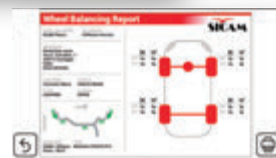
OPTIMIZED STATIC AND DYNAMIC FUNCTION (OSD)

- The new wheel balancer suggests the correct tire's position to guarantee the best matching between the rim the wheel

240 mm MEASUREMENT SHAFT

MULTI-FUNCTIONAL PEDAL

- Multifunctional: Electromechanical brake, Clamping, Unclamping
- Ergonomic design



Technical specifications	SBM WAVE 5
Balancing speed	220 rpm 50 Hz
Voltage supply	230 V 1 - (50/60 Hz)
Power input	0.7 kW
SBM WAVE 5 Touch AWxP compressed air supply	8 - 10 bar
Rim width, to be adjusted via buttons	2 - 20"
Rim width, measurement range of the electronic sliding calliper/measurement arm	1 - 15"
Rim diameter, to be adjusted via buttons	8 - 40"
Rim diameter, measurement range of the electronic sliding calliper	10 - 30"
Maximum wheel weight	80 kg
Maximum wheel diameter	1150 mm
Maximum measurement time	490 mm
Average measurement time	6 seconds
max. W x H x D	1400 x 1840 x 1300 mm
Net weight	160 kg

SCOPE OF DELIVERY

- ▶ Wheel protection
- ▶ Centering flange re-
specting the model
- ▶ Cones:
 - 3 cones for mechanical locking system
 - 4 cones for pneumatic locking system
- ▶ Weight plier
- ▶ Compass
- ▶ Calibration weight
- ▶ Operation manual with CE certification
- ▶ Weight scraper
- ▶ Rim protection-quicknut
- ▶ Light ring with laser pointers



WHEEL BALANCERS

SBM V660L



SBM V660L

Electronic wheel balancer with a 19" TFT monitor, laser line at 6 o' clock and sonar. SBM V660L is aimed at workshops with medium-high volumes and can operate on all types of cars, motorcycles, and light trucks wheels.

GRAPHIC INTERFACE

- New colored, clear and intuitive interface for a better usability

INTERNAL LIGHT

- Powerful LED light reduce efforts and mistakes during the weight application inside the rim

ALU DATA ARM

- 40 mm Smaller than SBM V 660 A.
- Make the data acquisition easy, especially with wide tires and high ET!

LASER LINE

Precise indication of adhesive weight positioning at 6 o'clock increase the productivity reducing mistakes and time losses

SONAR (ACCESSORY)

- Width measurement precise and fast without touching the rim
- Automatically spoke counting
- Everything in one device

ERGONOMY

- New ergonomic design for the pedal brake: wide and robust



Technical specifications	SBM V660 L	SCOPE OF DELIVERY
Power supply	110V/1 ph/50-60 Hz 230V/1 ph/ 50-60 Hz 230V/1ph/50 Hz	▶ Pliers ▶ Weight sample 60gr ▶ Gauge ▶ Rubber protection ▶ Weights removal blade ▶ Flange complete with cones
Balancing speed (50 - 60 Hz)	208 U/min 50 Hz 250 U/min 60 Hz	
Max. wheel weight	70 Kg	
Max. wheel diameter	1200 mm	
Max. wheel width	500 mm	
Settable rim diameter	6" - 40"	
Measurable rim diameter	10" - 27"	
Settable rim width	1" - 24"	
Measurable rim width	1" - 20"	
Power input	0,7 kW	
Max. dimensions (W x D x H)	1325 x 1365 x 1915 mm	



WHEEL BALANCERS

SBM 165L – 135L



SBM 165L: Electronic wheel balancer for passenger cars with head-up display, internal measuring arm, internal light, 6 o' clock laser line.

SBM 135L: Electronic wheel balancer for passenger cars with led digital display with internal measuring arm, internal light, 6 o' clock laser line.

INTERNAL LIGHT

- Powerful LED light reduce efforts and mistakes during the weight application inside the rim.

ALUDATA ARM

- 40 mm smaller then SBM V 660A
- Make the data acquisition easy, especially with wide tires and high ET

LASER LINE

- Precise indication of adhesive weight positioning at 6 'o clock increase the productivity reducing mistakes and time losses

SONAR(ACCESSORY)

- Width measurement precise and fast without touching the rim
- Automaticallyspokecounting
- Everythingin one device

ERGONOMY

- New ergonomic design for the pedalbrake: wide and robust



Technical specifications	SBM 135L - 165L
Power supply	110V/1 ph/50-60 Hz 230V/1 ph/ 50-60 Hz 230V/1ph/50 Hz
Balancing speed (50 - 60 Hz)	208 U/min 50 Hz 250 U/min 60 Hz
Max. wheel weight	70 Kg
Max. wheel diameter	1200 mm
Max. wheel width	500 mm
Settable rim diameter	6" - 40"
Measurable rim diameter	10" - 27"
Settable rim width	1" - 24"
Measurable rim width	1" - 20"
Power input	0,7 kW
Max. dimensions (W x D x H)	1325 x 1365 x 1915 mm

SCOPE OF DELIVERY

- ▶ Pliers
- ▶ Weight sample 60gr
- ▶ Gauge
- ▶ Rubber protection
- ▶ Weights removal blade
- ▶ Flange complete with cones



WHEEL BALANCERS

SBM V85A-60A-60



SBM V85/60A/60 entry level electronic wheel balancers. Thanks to the new extreme versatility and compact size design, the electronic wheel balancers are suitable for working in narrowest environments and with all types of car, motorcycle and lightweight transportation wheels.

- New Ergonomic wheel cover shape
- New weight holder
- Up to 820 mm diameter
- Max wheel weight 65 kg
- Small footprint
- Internal electronic measuring arm for rim distance & diameter
- Optional, external electronic measuring arm for rim width
- Many holders for weight and tools
- Monitor TFT 19" (SMB V85A)



Technical specifications	SBM 60/60 A	SBM V85 A
Power supply	230V 1ph 50/60 Hz	230V 1ph 50/60 Hz
Balancing speed (50-60Hz)	208 rpm (50Hz) / 250 (60 Hz)	208 rpm (50Hz) / 250 (60 Hz)
Max. Wheel Weight	65 Kg	65 Kg
Max. Wheel Diameter	820 mm	820 mm
Max. Wheel Width	420 mm	420 mm
Rim diameter	8" - 26,5" I / 10" - 24" Automatic	6" - 40" I / 10" - 24" Automatic
Rim Width	2" - 20" I / 1 - 20" Automatic	1" - 24" I / 1 - 20" Automatic
Accuracy	1g / 0.05oz	1g / 0.05oz
Max. dimensions (WxDxH)	1100 x 1270 x 1280	1100 x 1270 x 1370

SCOPE OF DELIVERY

- ▶ 19" TFT-Monitor / Double Digital LED Display
- ▶ Wheel protection
- ▶ Mechanic centering flange
- ▶ Cones:
3 cones for mechanical locking system
- ▶ Weight plier
- ▶ Compass
- ▶ Calibration weight

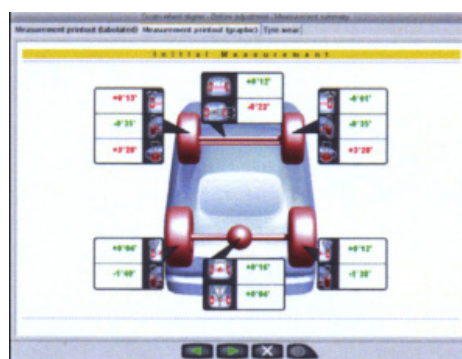
SA 880 Excellence



*Available also with the configuration without
hardware Model SA 800 Excellence w/o hardware
1690700029*

High measurements and repeated accuracy.

- ▶ Measuring board
- ▶ Brake lock
- ▶ Steering wheel lock
- ▶ Cable kit 15m for Easy 3D
- ▶ IR Remote control (IAM version)
- ▶ Lift adapter
- ▶ 4x Multi-Fit clamps
- ▶ Special claws for multi-fit clamp
- ▶ Set of 4 magnetic wheel fastener for 3D boards
- ▶ Mechanical standard aluminum turntable without electronics



Measurement printout

29



SA 880 D³ Mobile



SA 880 D³ MOBILE

12 Cam 3D technology. Measuring heads, 4 target boards, multibox for wireless data transmission. The accuracy of the measurements satisfies the workshops highest requirements.

- Two camera reference system; avoid fixed assembling and calibration of the sensors
- Rolling run-out compensation (even with running motor) with sensors' initialization
- The special shape and position of the sensors allow use of small places with limited space in front of the post
- Measurement of the vehicle in 7 minutes
- Movable system; sensors and cabiner can be easily displaced
- 30° + 30° rolling out compensation



Graphic illustration guide the operator during the adjustment phase



Measurement printout

Technical specifications	SA 880 D ³ RADIO KIT
Part number	1690700058
Com-box	Wifi
Sensor heads	X
Targets	X
Trolley	
High Performance PC	
Monitor 27"	
Printer	
Lift adapter	
Cable set 15m	
Multifit wheel clamp	
Special claws	
Magnetic wheel clamp	
Mechanical turntables	
Remote control	
Steering wheel holder	
Brake pedal depressor	

SCOPE OF DELIVERY

- ▶ Sensors heads
- ▶ Targets
- ▶ CPU
- ▶ Software and cara data bank
- ▶ User manual

SA 680 R Excellence



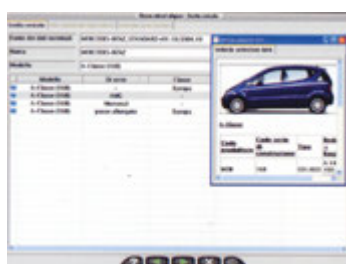
Available also with the configuration without hardware Model SA 680 R Excellence w/o hardware 1690310053

SA 680R EXCELLENCE - 8CCD wheel alignment system guarantees the highest precision, absolute accuracy and repeatability.

- Reading of angles greater than 20° which allows the measuring of the caster without electronic plates
- Run-out encoder that simplifies and speeds up run-out compensation operations
- Camber adjustment with vehicle in raised position
- Calculation of toe variation
- Different language selection
- Customer database index system with automatic search
- Car manufacturer target data updateable periodically

SCOPE OF DELIVERY

- ▶ Brake lock
- ▶ Steering wheel lock
- ▶ Cable set for measurement heads
- ▶ Set of measurement heads 8-CCD radio 433 Mhz without encoder
- ▶ IR remote control (IAM version)
- ▶ 4 X Multi-Fit clamps
- ▶ Special claws for multi-fit clamp
- ▶ Mechanical standard aluminium turntable without electronics



Database complete and updatable periodically



Overview of vehicle data quick checking



Simple, intuitive icons allow direct selection of the required pages



Graphic illustration guide the operator during the adjustment phase



Additional measurements allow verifying the deck conditions

Technical specifications	SA 680 R EXCELLANCE	SA 680 R W/O HW
Part number	1690310042	1690310053
CCD Sensor heads	X	X
Frequency	443 Mhz	443 Mhz
Trolley	X	X
High Performance PC	X	
Monitor 27"	X	
Printer	X	
Mechanical turntables	X	X
Multifit-Clamps	X	X
Special claws	X	X
Remote control	X	X
Steering wheel holder	X	X
Bake pedal depressor	X	X
Emergency cable set	X	X



SA 685 MOBILE



SA 685 MOBILE -8 CCD wheel alignment system guarantees the highest precision, absolute accuracy and repeatability without cabinet or PC.

- Reading of angles greater than 20° which allows the measuring of the caster without electronic plates
- Run-out encoder that simplifies and speeds up run-out compensation operations
- Camber adjustment with vehicle in raised position
- Calculation of toe variation
- Different language selection
- Customer database index system with automatic search
- Car manufacturer target data updateable periodically



Database complete and updatable periodically



Overview of vehicle data quick checking



Simple, intuitive icons allow direct selection of the required pages



Graphic illustration guide the operator during the adjustment phase



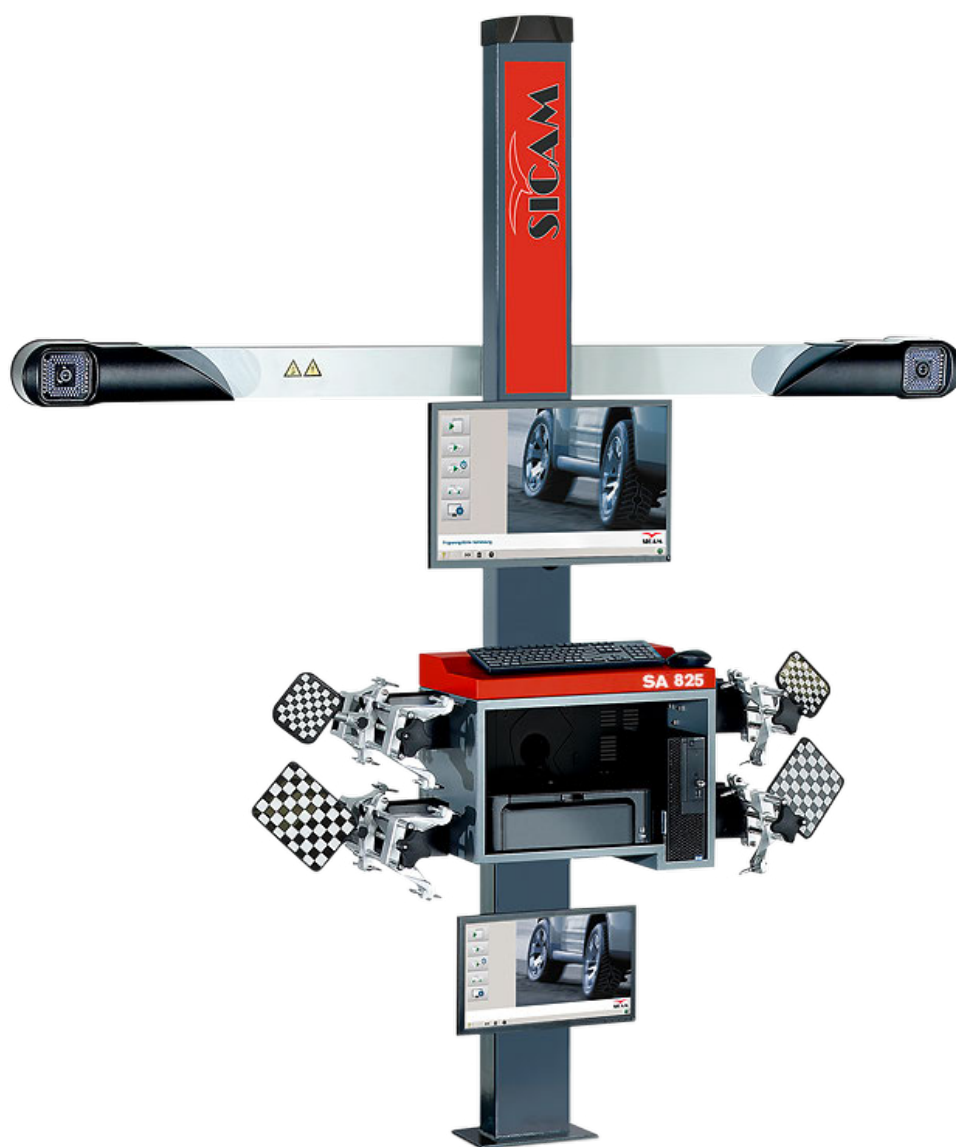
Additional measurements allow verifying the deck conditions

Technical specifications	SA 685 MOBILE
Part number	1690310058
CCD Sensor heads	X
Frequency	443 Mhz
Trolley	
High Performance PC	
Monitor 27"	
Printer	
Mechanical turntables	
Multifit-Clamps	
Special claws	
Remote control	
Steering wheel holder	
Bake pedal depressor	
Emergency cable set	X

SCOPE OF DELIVERY

- ▶ Sensor heads charging pods
- ▶ Cable set for measurement heads
- ▶ Measurement system for bluetooth transmission
- ▶ Set of measurement heads 8-CCD radio 433 Mhz with encoder

SA 825



3D TECHNOLOGY WITH 2 CAMERAS

HEIGHT ADJUSTMENT OF THE CAMERA BEAM

Between 600 and 2400 mm for variable working heights
(even on ground level)
SA 825: manually adjustable

MEASUREMENT INSTRUCTIONS

Via monitor or smart camera LEDs for:

- the alignment of the targets
- runout compensation
- steering lock

SMALL TARGETS

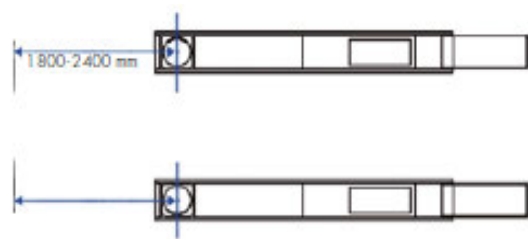
- space saving design
- No mechanical spirit level (virtual alignment)

WHEEL ALIGNMENT SOFTWARE

- Dell PC running on Windows 10
- User-friendly, intuitive interface
- Program-controlled measurement routines: standard, quick & random
- Comprehensive Autodata vehicle database with editor
- Camber indication in lifted condition eases the adjustment

ADDITIONAL MEASUREMENT PARAMETERS

- Rim diameter
- Side offset
- Axle spacing
- Longitudinal offset
- Difference: axle spacing
- Difference: track width



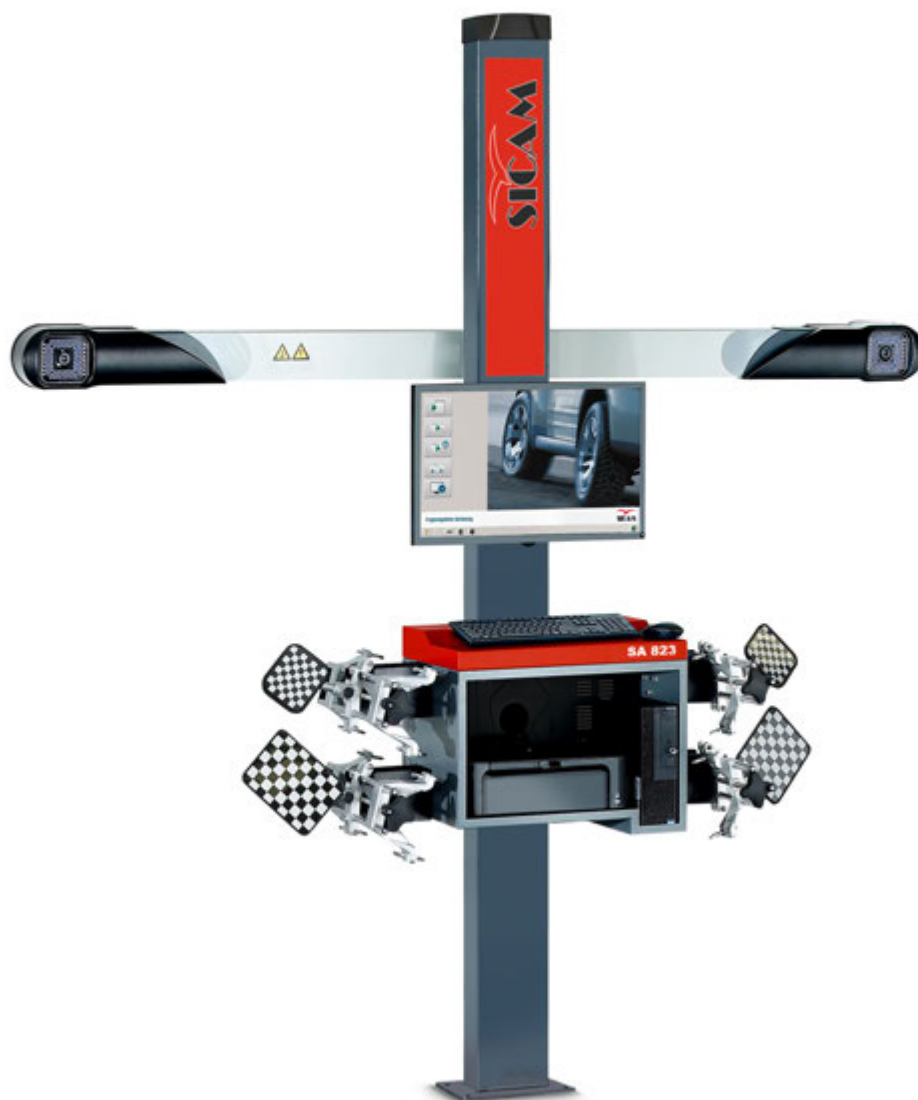
SCOPE OF DELIVERY

- ▶ 24" Monitor (Upon request)
- ▶ 19" Monitor (only for ML 35)
- ▶ Target: Front left, front right
- ▶ Turntable 2 pieces already Included (1 piece)
- ▶ Filling bars for turntable 1 692 000 155 (2 pieces)
- ▶ Universal clamp 13-25" 4 pieces (incl. Standard car clamps) already included (1 piece)
- ▶ Brake lock
- ▶ Steering lock
- ▶ Brake chocks (2 pieces)

SPECIAL ACCESSORIES

- ▶ Printer (Upon request)
- ▶ Standard claw for Universal clamp for normal steel rims
- ▶ Standard claw 1 for Universal clamp for standard alloy and alloy softline rims
- ▶ Standard claw 2 for Universal clamp for standard alloy rims
- ▶ Standard claw 3 for Universal clamp for standard alloy rims
- ▶ Multi-fit clamp 13-22" 4 standard claws for Multi-Fit clamps
- ▶ Extension to 28" for Multi-Fit clamp
- ▶ Standard claw for Multi-Fit clamp for normal steel rims
- ▶ Standard claw For Multi-Fit clamp For standard alloy and alloy softline rims
- ▶ Truck claw for Multi-Fit clamp

SA 823



HEIGHT ADJUSTMENT OF THE CAMERA BEAM

Between 600 and 2400 mm for variable working heights (even on ground level)
SA 825: manually adjustable

MEASUREMENT INSTRUCTIONS

Via monitor or smart camera LEDs for:

- the alignment of the targets
- runout compensation
- steering lock

SMALL TARGETS

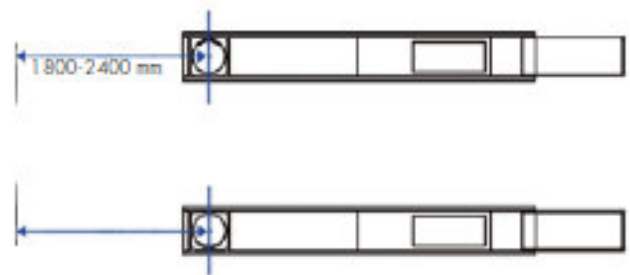
- space saving design
- No mechanical spirit level (virtual alignment)

WHEEL ALIGNMENT SOFTWARE

- Dell PC running on Windows 10
- User-friendly, intuitive interface
- Program-controlled measurement routines: standard, quick & random
- Comprehensive Autodata vehicle database with editor
- Camber indication in lifted condition eases the adjustment

ADDITIONAL MEASUREMENT PARAMETERS

- Rim diameter
- Side offset
- Axle spacing
- Longitudinal offset
- Difference: axle spacing
- Difference: track width



SCOPE OF DELIVERY

- ▶ 24" Monitor (Upon request)
- ▶ 19" Monitor (only for ML 35)
- ▶ Target: Front left, front right
- ▶ Turntable 2 pieces already included (1 piece)
- ▶ Filling bars for turntable 1 692 000 155 (2 pieces)
- ▶ Universal clamp 13-25" 4 pieces (incl. Standard car clamps) already included (1 piece)
- ▶ Brake lock
- ▶ Steering lock
- ▶ Brake chocks (2 pieces)

SPECIAL ACCESSORIES

- ▶ Printer (Upon request)
- ▶ Standard claw for Universal clamp for normal steel rims
- ▶ Standard claw 1 for Universal clamp for standard alloy and alloy softline rims
- ▶ Standard claw 2 for Universal clamp for standard alloy rims
- ▶ Standard claw 3 for Universal clamp for standard alloy rims
- ▶ Multi-fit clamp 13-22" 4 standard claws for Multi-Fit clamps
- ▶ Extension to 28" for Multi-Fit clamp
- ▶ Standard claw for Multi-Fit clamp for normal steel rims
- ▶ Standard claw For Multi-Fit clamp For standard alloy and alloy softline rims
- ▶ Truck claw for Multi-Fit clamp

TF 311 – BA 201



TF 311 - BA 201

Entry level tyre service equipment.

With the Start Line TF 311 and BA 201 Sicam offers the right entry level equipment for low volume workshops.

The Start Line TF 311 is a pole tilting back tyre changer equipped with a 20" turntable (external clamping) while the Start Line BA 201 offers the easy fit function for up to 800 mm wheel diameter.

Both machines are reliable and rigid for maximum performance.

Made in China.

Technical specifications	START LINE TF 311
Vertical arm	Pole tilting back
Clamping EXT	9-20"
Clamping INT	11-22"
Wheel diameter	1,050 mm
Max wheel width	13"
Air supply	8-10 bar
N. speed	1
Speed	6.5 rpm
Helper	Accessory
SoD	Inflating gun

Technical specifications	START LINE BA 201
Max wheel weight	65 Kg
Wheel diameter	800 mm
Wheel width	20"
Measure time	8s
Rim width	1.5-16"
Rim diameter	12-24"
Easy fit function	YES
Data Entry	2D
Accessories	Flange, cones, plier, manual width caliper



NOTE

A series of horizontal lines for writing notes, spanning the width of the page.



www.sicam.it



www.sicam.it



Sicam S.r.l. Società Unipersonale | Via G. Corradini, 1 - 42015 Correggio (RE) Italy
T: +39 0522 643-311 | F: +39 0522 637-760 | sales@sicam.it | www.sicam.it

member of BASE Group

BASE

REV. 01/2021

baseautomotive.com